

## INSET Day



We hope all our children and their families have had a great day at home today whilst the staff have been working hard in school. The staff have been working hard and making plans to raise attainment and improve outcomes for all children across school.



This means we are putting everything we possibly can in place to make sure children are ready for their next phase in education and reach (at least) the national expectations. We want all children to reach their full potential in the future. Please work with your child's class teacher to make sure they do so.

## EYFS

### Ruby

This week in Ruby Class, we have super sensibly been learning about what to do in an emergency and who can help us – ask us to tell you what we know!



### Amber

This week, we have been learning to understand how sounds build words in sentences.

We need a finger space after every word!

## KS1

### Opal

In RE, we have been learning about Diwali, the festival of light. We have sequenced the story of Rama & Sita and made rangoli and mehndi patterns.



### Jade

In maths, we have been learning all about making and adding equal groups. We have even moved on to exploring arrays in lots of fun ways!

Ask me what an array is.



### Pearl

In music, we have been learning to compose our own music and play it on a glockenspiel.



## Lower KS 2

### Topaz

This week, Topaz class has been learning all about writing instructions. We tried to give Mr Hampson instructions to put his coat on, but it didn't go very well! Look at the pictures of us following the instructions for 'How to wash a woolly mammoth', it was great fun!



### Citrine

We have worked hard to develop our teamwork skills. We know this is important so we can learn with each other and learn from one another. This is equally valuable in and out of the classroom, as we discovered in our history and PE lessons this week.

### Emerald

This week we have been practising our different shading techniques and using different materials. We used charcoals to create our hand cave drawings, creating a gradient effect by smudging. We have also been using oil pastels to create some animal cave art like the ones we have seen from the Stone Age.



## Upper KS2

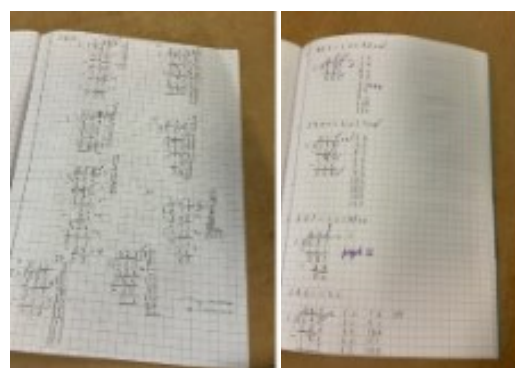
### Amethyst

This week in Amethyst class, we have been focusing on short and long division in numeracy, evaluating the distance between the planets in our solar system in science and studying witches as part of our Macbeth topic in literacy and vipers.



### Tanzanite

This week in maths, we have been focusing on short division with remainders. Whilst in English, we have been conducting our own research about witches so we can produce our own non-chronological reports about them



### Sapphire

In maths, we have been practicing using long division to divide 3, 4 and 5 digit numbers by 2 digit numbers. We used our knowledge of times tables to help us. It was tricky but our resilience paid off and we were all successful!

## Star of the Week

**Well done to this weeks stars of the week.**

<b>Amber</b>	Maddison	For a fantastic effort towards phonics and blending!
<b>Ruby</b>	Savannah	For being much more independent and joining in with all her learning.
<b>Opal</b>	Madiha	For a big positive change in her attitude and effort towards her learning.
<b>Jade</b>	Rahil	For settling into his new class and making lots of new friends.
<b>Pearl</b>	Lilly	Always trying her hardest in all her learning.
<b>Topaz</b>	Naila	Some excellent 'independent' writing.
<b>Citrine</b>	Amanah	Growing in confidence and seeing the results of her consistent best efforts.
<b>Emerald</b>	Hanaa	For her hard work during English and producing an excellent Stone Age diary entry.
<b>Amethyst</b>	Tia	Always gives 100% in everything she does and is such a pleasant member of the class.
<b>Tanzanite</b>	Leo	For showcasing an amazing attitude to all of his of learning across the curriculum.
<b>Sapphire</b>	Jayden	For his hard work in maths this week and for not giving up.

**Principal's Reading Champions:** Yusra, Rebecca, Patrick, Poppy, Hadia, Samrina, Mia-Rose, Olly, Mia, Alissa-Mae, Olivia

### Lunch



Please can we remind parents carers that we do not allow hot food from home to be brought into school at lunch times due to health and safety concerns. If parents/carers would like children to have a hot meal, please speak to the office staff and they will arrange the school kitchen to arrange this for them.



### Parent Conduct

School is a safe place for all children and families. Thank you for your support in ensuring that this is maintained. Please note that disrespectful

interactions between parents will not be tolerated. Should school be made aware of any concerns, parents will be refused entry onto the school grounds. Please model friendly and respectful interactions so that our children see great social role models.





### Key Stage 2 iPad use

A reminder that all pupil iPads must be used appropriately both in school and at home. All children and their parents/carers have completed 'Acceptable User Agreements' and the points within these must be upheld. Children must use their iPads to access the learning platforms and accounts that have been set up by school only and no others. Children should not use a personal or home email addresses to log into anything on the iPad. If children cannot use their iPads safely and appropriately, they will be removed.



### Breakfast Club

We love inviting our Alt families into breakfast club every morning. We invest a significant amount of money into providing our breakfast club so that it can be offered free of charge to our children and families because we know that a good breakfast is essential to fuel learning. Please can we remind all children and adults that we only allow breakfast food from school to be consumed in the hall. Can we also please request that optimum respect is upheld in the school hall. Everybody must tidy up after themselves. Thank you for your continued support with this.



### Nursery Places - September 2024

We now have a waiting list open for nursery places for September 2024. If you would like to add your child's name to the waiting list, please call into the office.



### Nursery Places - 30 Hours

If your family are eligible to receive 30 hours of funded childcare and you would like to take this up at Alt Academy, please add your details to the expression of interest form at the office. We will then be in touch with further information.

**30 HOURS**  
**FREE CHILDCARE**

### Golden Rules

**Be Respectful**

**Be Kind**

**Be Hardworking**

**Be Honest**

Our newly introduced Golden Rules are now firmly in place. The children have responded incredibly well to their introduction and can model our Golden Rules beautifully. We are very proud of the children for using the Golden Rules as they go about their school day!



## Programme of Coffee Morning Agenda 2023-24 Autumn 2

Coffee mornings will take place every Tuesday morning at 9:00am in the KS2 hall. Everyone is welcome to attend. Here is the agenda for this half term..... please come and join us!



Week Number	Date of Coffee Morning	Agenda
Week 4	Tuesday 21 <sup>st</sup> November	Action Together - voluntary work & support to improve health & wellbeing
Week 5	Tuesday 28 <sup>th</sup> November	Coffee, chatter and natter! <b>Reading</b>
Week 6	Tuesday 5 <sup>th</sup> December	Kooth & Qwell - online counselling and emotional well-being service
Week 7	Tuesday 12 <sup>th</sup> December	Coffee chatter and natter!
Week 8	Tuesday 19 <sup>th</sup> December	Review & festive party

## Crossing Patrol

We are currently experiencing intermittent levels of school crossing patrol outside Alt Academy. This means, that there will be some sessions where there is not a crossing patrol on site. Whilst staff on duty can support a child crossing the road if they appear to be in danger, this support is not consistently available and is not to be relied upon. Please support your children to be safe on the crossing. If your child walks to and from school alone, please discuss road safety with them.



## Attendance



**Overall attendance year to date – 93.1%**

**Weekly winners – Well done to: -**

**EYFS and KS1 – Pearl 96.7%**

**KS2 – Tanzanite 97.3%**

**Our target is 96%**





## Christmas Calendar

27.11.23	Deadline to order a Christmas lunch for children who usually have a packed lunch – a letter will be sent out about this.
1.12.23	Christmas card post box open – located in KS2 entrance hall.
4.12.23	Baskets in the KS2 hall for chocolate donations – these will be used during Christmas celebrations.
4.12.23	Tickets for the Reception and KS1 Nativity will be available from the office from 08:30. Strictly 2 tickets per family allocation.
14.12.23	Ukulele Showcase, 09:15 – Year 3 and 4 families welcome to attend.
18.12.23	Reception and KS1 Nativity performances, 09:15 and 14:00 (strictly ticketed event, 2 tickets per family).
18.12.23	Steel Pan & Glockenspiel Showcase, 10:30. Invited families will be informed in advance.
21.12.23	Christmas lunch.
22.12.23	Christmas jumper and party day. £1 per child donation (Year 6 fundraising opportunity).
22.12.23	Last day of term.

### Reception & KS1 Nativity

The children in Reception will perform the Nativity, whilst children in KS1 will be singing during the performance. There will be two performances – 09:15 and 14:00 on Monday 18th December. Due to the capacity levels of the hall, there will be two tickets available for each family. To ensure that all families can watch their child, this will be strictly adhered to. Tickets will need to be shown to gain entry to the performance. Young children under 3 may attend if they are sat on their parents' knee – they won't have their own chair. Tickets will be on a first come first served basis and will be available at the school office from 08:30 on 4th December. Should there be tickets still available on 11th December, they will be offered to Reception parents first, followed by KS1 parents. The performance will be shared on our private YouTube page so that you can watch it at home too!



We are sure that this will be a super performance and we can't wait to share it with you.

### Oldham Christmas Parade

**Saturday 18 November 12 noon**

Christmas wouldn't be Christmas without the annual Oldham Christmas Parade, and this year it's back and bigger than ever! Join Santa and all his friends in the Town Centre, including over 200 local performers and community group members.

The not-to-be-missed festive carnival is filled with music and yuletide fun. Don't miss the brilliant festive performances from Dobcross Silver Band, Jubacana, and Oldham Scottish Pipe Band.

The parade starts at 12 noon and will travel through the town centre.



# BE SMART ONLINE



**S**

## SAFE

Keep your personal information safe. When chatting or posting online don't give away things like your full name, password or home address. Remember personal information can be seen in images and videos you share too. Keep them safe to keep yourself safe.



**M**

## MEET

Meeting up with someone you only know online, even a friend of a friend, can be dangerous as this person is still a stranger. If someone you only know online ever asks you to meet up, for personal information or for photos/videos of you then tell an adult straight away and report them together on [www.thinkuknow.co.uk](http://www.thinkuknow.co.uk)

THINK  
U  
KNOW

**A**

## ACCEPTING

Think carefully before you click on or open something online (e.g. links, adverts, friend requests, photos) as you never know where they may lead to or they may contain viruses. Do not accept something if you are unsure of who the person is or what they've sent you.



**R**

## RELIABLE

You cannot trust everything you see online as some things can be out of date, inaccurate or not entirely true. To find reliable information compare at least three different websites, check in books and talk to someone about what you have found.



**T**

## TELL

Tell a trusted adult if something or someone ever makes you feel upset, worried or confused. This could be if you or someone you know is being bullied online. There are lots of people who will be able to help you like your teachers, parents, carers or contact Childline - 0800 11 11 or [www.childline.org.uk](http://www.childline.org.uk)



## BE SMART WITH A HEART

Remember to always be smart with a heart by being kind and respectful to others online. Make the internet a better place by helping your friends if they are worried or upset by anything that happens online.



[WWW.CHILDNET.COM](http://WWW.CHILDNET.COM)

**S**

### Stay Safe

Don't give out your personal information to people / places you don't know.



**M**

### Don't Meet Up

Meeting someone you have only been in touch with online can be dangerous. Always check with an adult you trust.



**A**

### Accepting Files

Accepting emails, files, pictures or texts from people you don't know can cause problems.



**R**

### Reliable?

Check information before you believe it. Is the person or website telling the truth?



**T**

### Tell Someone

Tell an adult if someone or something makes you feel worried or uncomfortable.



Follow  
these SMART  
tips to keep  
yourself safe  
online!